

SPECIFICATION

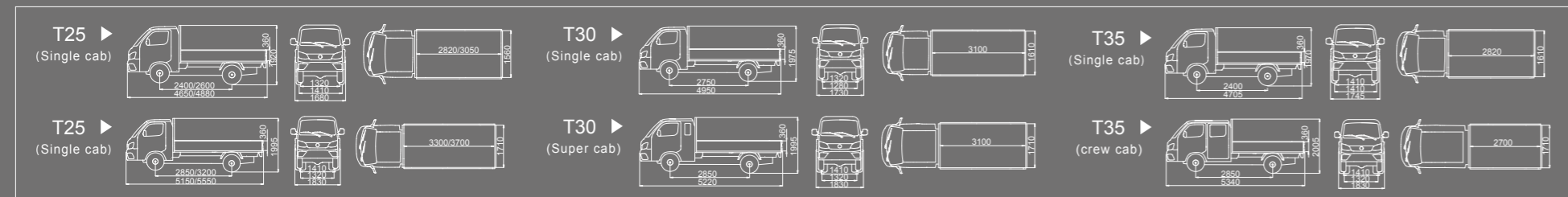


Specifications		Units	Type	T25			T30				T35		
Model		/	/	Gasoline			Gasoline		Diesel (RHD)		Gasoline	Diesel	
		/	/	Single Cab		Crew Cab	Single Cab		Single Cab		Crew Cab	Single Cab	Super Cab
Dimensions	Overall dimensions	mm	Chassis	4470×1590×1850	4670×1590×1850	4670×1590×1850	4870×1665×1900	5005×1725×1925	4520×1590×1890	4550×1725×1945	5175×1725×1935	5005×1725×1925	5055×1725×1945
	Cargo dimensions (Internal)	mm	Deck	2820×1560×360	3050×1560×360	2300×1560×360	3100×1610×360	3300×1710×360	2820×1560×360	2820×1610×360	2700×1710×360	3300×1710×360	3100×1710×360
		mm	Box	2820×1560×1570	3050×1560×1570	2300×1560×1570	3100×1610×1700	3300×1710×1700	2820×1560×1570	2820×1610×1700	2700×1710×1700	3300×1710×1700	3100×1710×1700
Weights	Wheelbase	mm	/	2400	2600	2600	2750	2850	2400	2400	2850	2850	2850
	GVW	kg	Deck	2795	2795	2795	3390	3460	3025	2690	3490	3404	3404
	Curb Weight	kg	Deck	1210	1210	1270	1360	1530	1400	1560	1670	1730	1740
Engine	Engine model	/	/	DAM15R	DAM15R	DAM15R	DAM15L	DAM15L	QC480Q	4A2-88C53	DAM15L	4A2-88C53	4A2-88C53
	Displacement	mL	/	1498	1498	1498	1498	1498	1809	2156	1498	2156	2156
	Power	kW/rpm	/	82/6000	82/6000	82/6000	82/6000	82/6000	29/3200	65/3200	82/6000	65/3200	65/3200
	Torque	N·m/rpm	/	142/4500	142/4500	142/4500	142/4500	142/4500	104/1900-2100	240/2000	142/4500	240/2000	240/2000
Transmission	Type	/	/	5MT	5MT	5MT	5MT	5MT	5MT	5MT	5MT	5MT	
Tires	Quantity	/	/	4+1	4+1	4+1	6+1	6+1	4+1	6+1	6+1	6+1	
	Model	/	/	175R14LT	175R14LT	175R14LT	175R14LT	185R14LT	175R14LT	185R14LT	185R14LT	185R14LT	
Suspension	Front	/	/	McPherson independent suspension			Leaf spring			Leaf spring			
	Rear	/	/	Leaf spring			Leaf spring			Leaf spring			
Brakes	/	/	Front disc, Rear drum			Front disc, Rear drum			Front disc, Rear drum				
Power steering	/	/	Electric power			Electric power			Hydraulic power				
Equipments	ABS	/	/	○	○	○	○	○	○	○	○	●	●
	Power window	/	/	○	○	○	○	○	○	○	○	○	○
	Fog lamp & DRL	/	/	○	○	○	○	○	○	○	○	○	○
	Air conditioner	/	/	○	○	○	○	○	○	○	○	○	○
	Leather seats	/	/	○	○	○	○	○	○	○	○	○	○

COLORS



DIMENSIONS



FOTON GUYANA

www.gtautomotive.gy

All rights reserved. All the information and figures included in this brochure are just for reference. FOTON MOTOR GROUP holds the right of final interpretation and modification of this brochure. +5927416666



SCAN HERE

TRUCK MATE

A TRUSTED TRUCK MATE OF YOUR BUSINESS



HIGH-LOAD, COMFORTABLE AND SAFE MICRO-LOGISTICS EXPERT

TRUCK MATE is the new generation of Foton mini truck product, developed in strict accordance with the product creation process, which has passed the verification of extreme environment of high temperature, cold climate and plateau area and the severe limit road endurance test of 560,000 km. Its B10 life is over 300,000 km.

TM comes in two body widths of 1550mm and 1650mm, two power of gasoline and diesel, two configurations of single rear tire and double rear tires, covering the market from GVW 1.8t to 3.5t.

TM is a mini truck positioning at urban end logistics with high performance, which can meet the transportation needs of drinks, clothing, fruits and vegetables, furniture, daily provisions, hardware and building materials and other goods.



ONE IS ENOUGH



METAL BUILDING MATERIALS

EASY TO ARRIVE

CLOTHING & FABRIC

RUN EFFICIENTLY



FRUITS & VEGETABLES

ARRIVE ON TIME



ONE IS ENOUGH

FURNITURE & HOUSEWARE

**LOAD MORE
RUN FASTER**



GENERAL MERCHANDISE

Supermarket

**MORE RELIABLE
MORE SECURE**



ONE IS ENOUGH

BEVERAGES

SAFE ARRIVAL

DRINKS



FASHIONABLE EXTERIOR



- Wide front windshield



- Star diamond headlamp



- Fashion front face



- LED daytime running lights

INNOVATIVE INTERIOR



- Car dashboard



- Electric doors and windows + central locking



- Humanized storage space

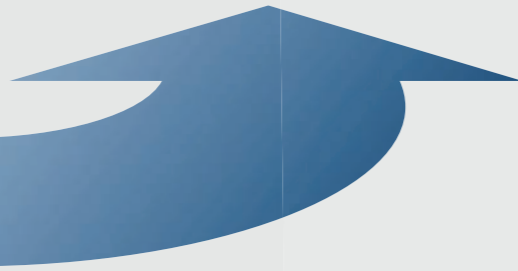


- Adjustable seats

FLEXIBLE & CONVENIENT



Turning radius 4.9m



- Largest container in the same category

- Load or unload anytime, anywhere



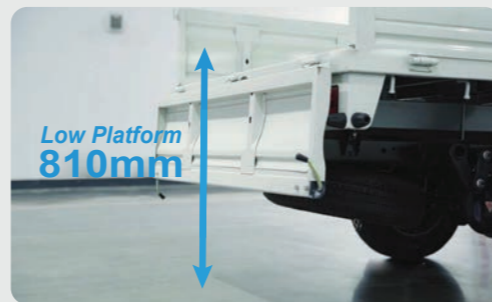
- The floor is 500mm above the ground



- 70 ° door opening angle

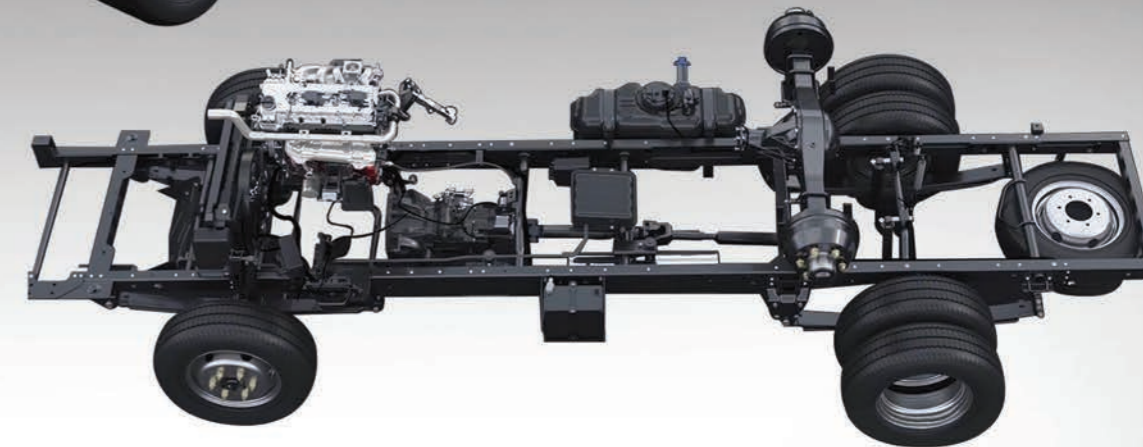


- Door handle



- 810mm low platform

SUPER BEARING CAPACITY



- Reinforced rear axle (2T/2.5T)



- High load leaf spring



- High load radial tire



- Rear double tire

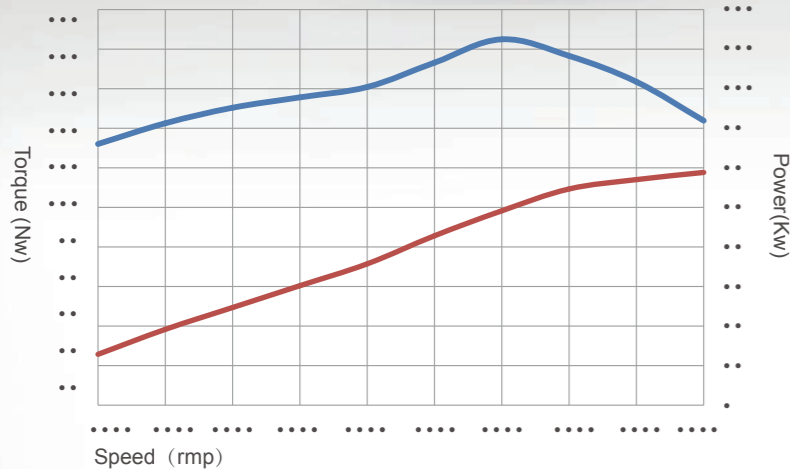
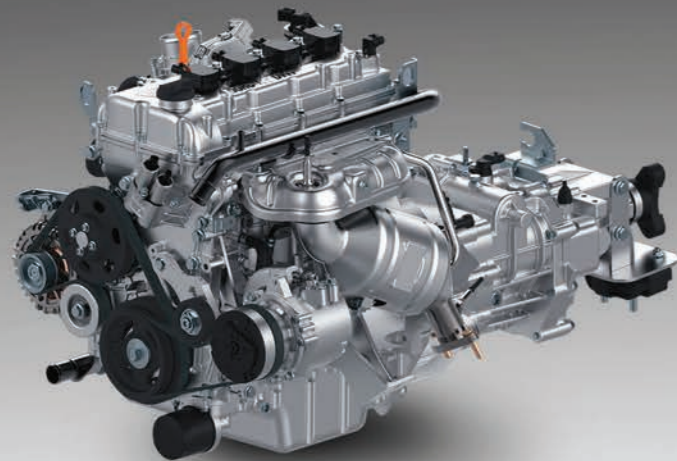
STRONG POWER

82_{/KW}

Torque

142_{/N-m}

Power



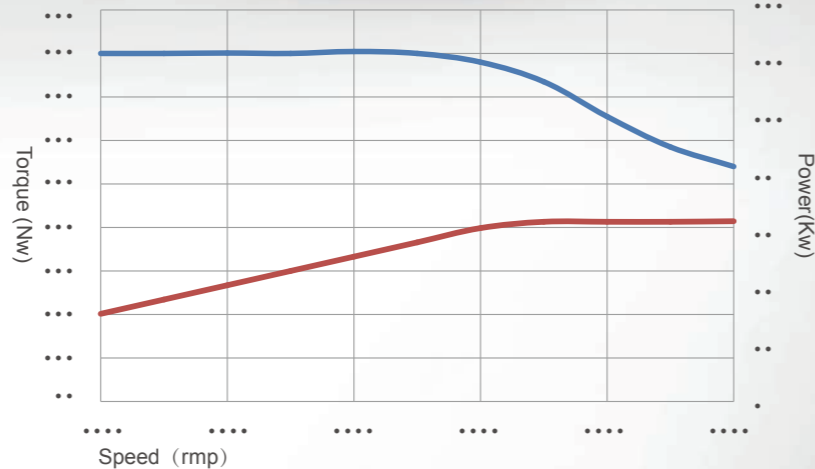
Gasoline Engine (DAM 1.5L)

65_{/KW}

Torque

240_{/N-m}

Power



Diesel Engine (4A2 2.2L)

LESS

- Weight
- Friction
- Noise
- CO₂
- Maintenance

MORE

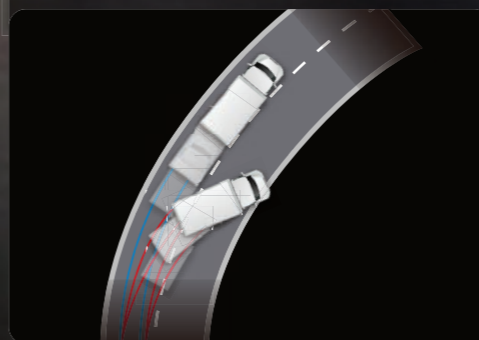
- Power
- Torque
- Durability
- Fuel Efficiency
- Environmental Friendliness

SUPER SAFETY

TRUCK MATE is the first flat-head mini truck passed the frontal crash test in China, effectively protect the safety of driver.



ACTIVE SAFETY



• ABS+EBD

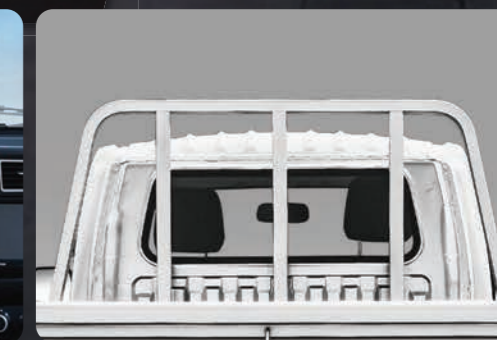


• Rear view camera

PASSIVE SAFETY



• Driver airbag



• Loadbody is separated with cab
• Reinforced portal frame